



RECP #: 752606

RECORDED 5/8/2019 AT 1:07 PM BK# 2620 PG# 1648  
Debra K. Lee, CLERK OF LARAMIE COUNTY, WY PAGE 1 OF 1

# STATE OF WYOMING CORNER RECORD

(In compliance with the CORNER PERPETUATION AND FILING ACT, Wyoming Statutes, 1997 Section 33-29-140, et. seq., and the Rules and Regulations of the Board of Registrations for Professional Engineers and Professional Land Surveyors)

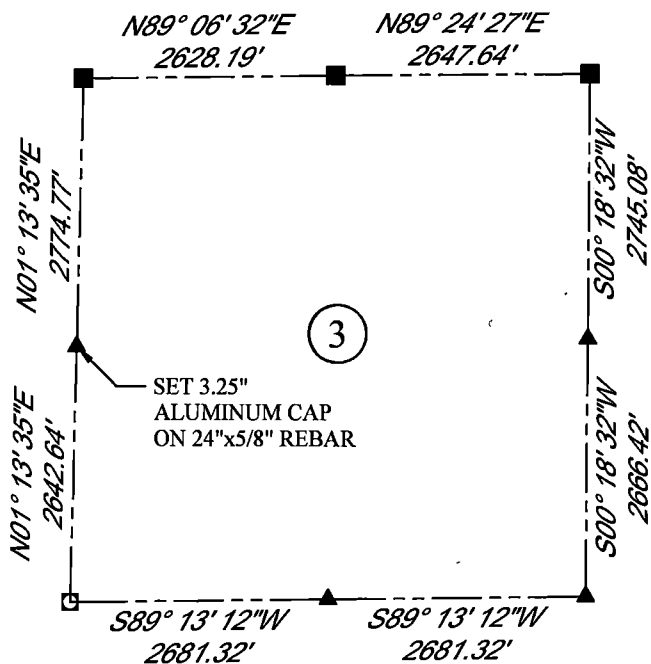
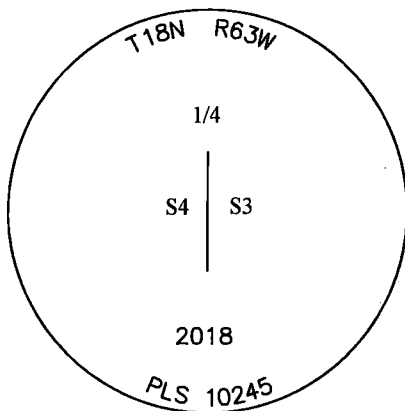
## WEST QUARTER CORNER SECTION 3, T. 18 N., R. 63 W., 6TH P.M., LARAMIE COUNTY, WYOMING

**GLO:** SET A GRANITE STONE 14X10X5, 8 IN. DEEP MARKED 1/4 ON THE W. SIDE FOR 1/4 SEC. CORNER.

**SET:** 3.25" ALUMINUM CAP, 19" BELOW SURFACE IN PLOWED FIELD, MARKED AS SHOWN. NO REFERENCE MARKERS TO SET LESS THAN 300' AWAY.



SCALE: 1" = 2000'  
NORTH DETERMINED BY  
G.P.S OBSERVATIONS



### LEGEND:

- FOUND BLM CAP
- ⊙ FOUND USFS CAP
- FOUND STONE
- FOUND PRIVATE MONUMENT
- ▲ CALCULATED POSITION
- ◆ SET MONUMENT (LS10245)
- SECTION LINE

DATE OF FIELD WORK: 08/28/2018 OFFICE REFERENCE: 746049 ----

### CROSS INDEX DIAGRAM

A	1	2	3	4	5	6	7	8	9	10	11	12	13	14	15	16	17	18	19	20	21	22	23	24	25	A
B																										B
C		6		5			4		●	3			2													C
D																										D
E																										E
F																										F
G			7		8		9		10		11		12													G
H																										H
J																										J
K																										K
L			18		17		16		15		14		13													L
M																										M
N																										N
O																										O
P			19		20		21		22		23		24													P
Q																										Q
R																										R
S																										S
T			30		29		28		27		26		25													T
U																										U
V																										V
W																										W
X			31		32		33		34		35		36													X
Y																										Y
Z																										Z

WOOD  
2615 AVIATION DRIVE  
SHERIDAN, WY 82801  
PH: 307-675-6400

# wood.

THIS CORNER RECORD WAS  
PREPARED BY ME OR UNDER  
MY DIRECTION AND  
SUPERVISION,  
SEAL AND SIGNATURE

